

In-Class Exercise 1. Watershed Delineation

Purpose

Apply principles of watershed delineation to identify drainage areas to points of interest.

Requirements

- 1) Pencil/pen
- 2) 11X17 topographic map (to be provided).

Problem 1

Figure 1 is a map of a portion of Lake Jackson, Florida. On the map, a bridge is identified as an outlet to a watershed.

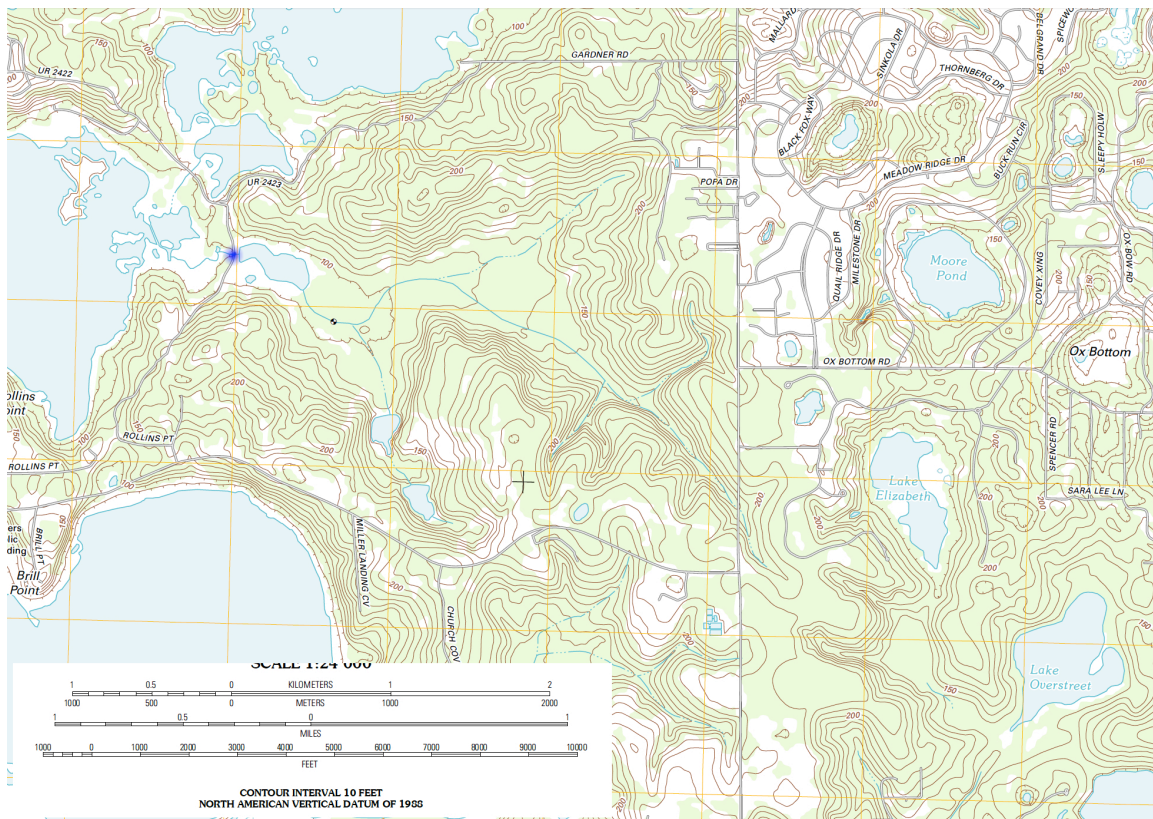


Figure 1. Topographic Map of Lake Jackson, Florida

Exercise

Delineate the watershed that drains to the bridge crossing on the North-South highway.

Problem 2

Figure 1 is a map of a portion of Concho County, Texas. In the Southeast corner of the map is Eden, Texas. A US highway runs nearly East-West through Eden and another US highway runs North-South.

Four circles are plotted on the map, one on the East-West highway, two on the North-South highway, and one to the North of the East-West Highway.

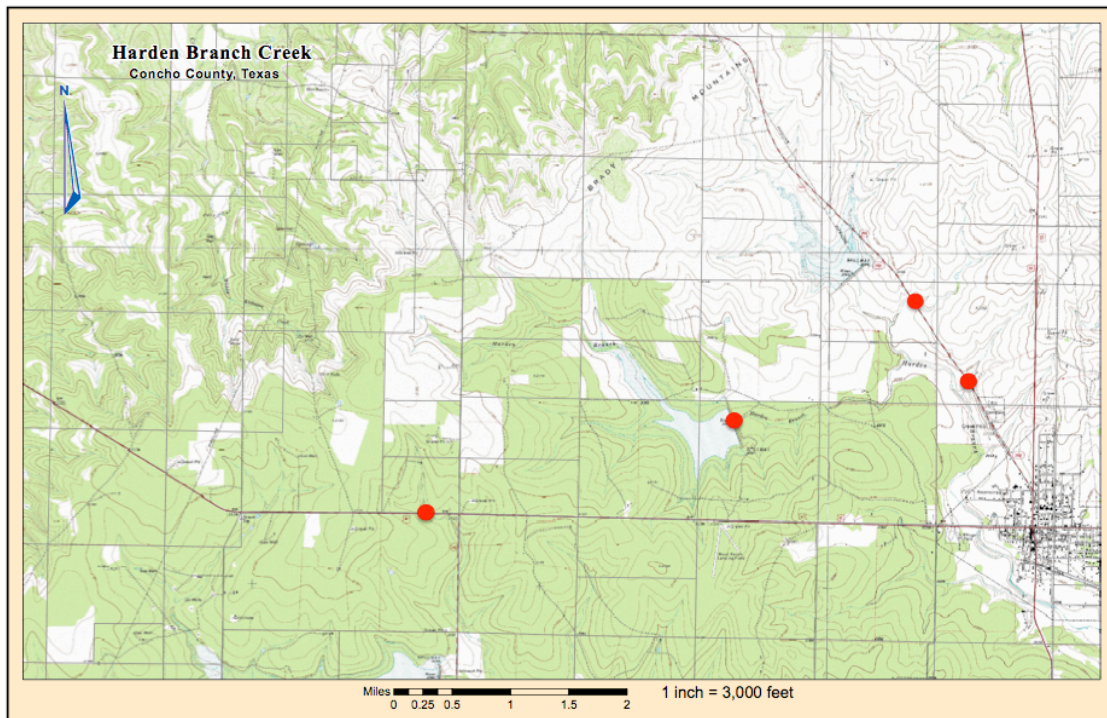


Figure 2. Harden Branch Creek near Eden, Texas

Exercise

Delineate the watershed that drains to the four crossings (red markers) on the map. Start with the West-most marker.