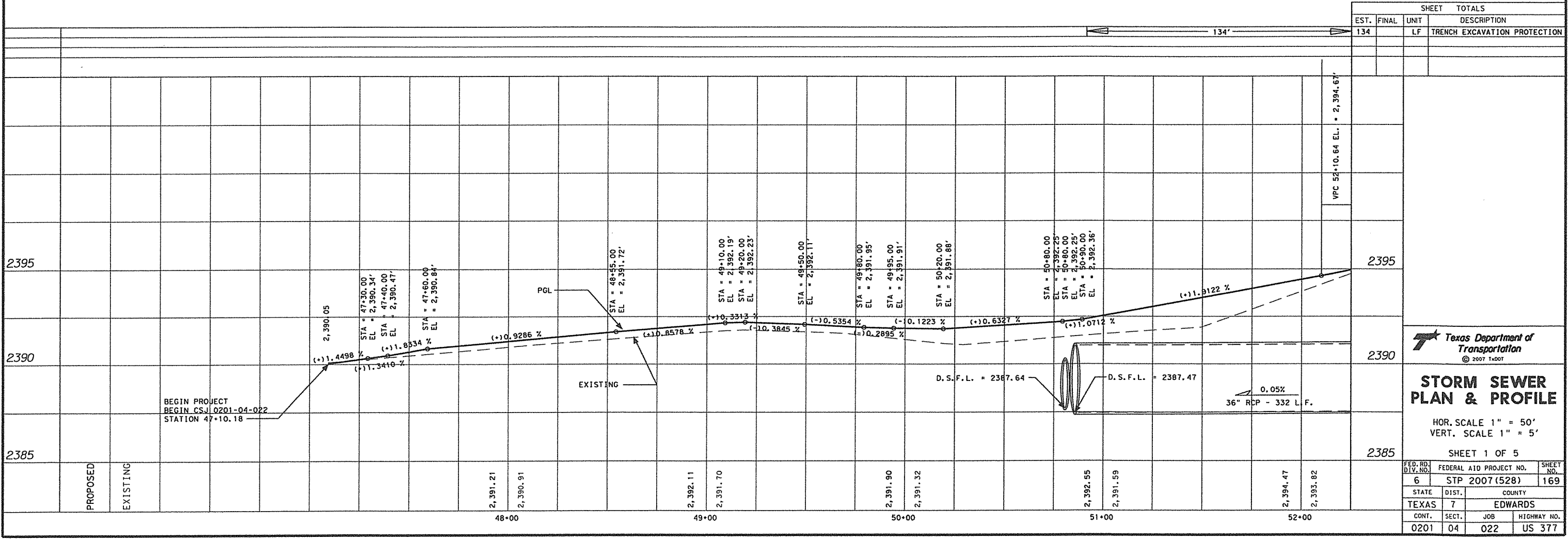


THE SEAL APPEARING ON THIS DOCUMENT WAS AUTHORIZED BY George R. Herrmann, P.E. #79293 ON 17 February 2007. ALTERATION OF A SEALED DOCUMENT WITHOUT PROPER NOTIFICATION TO THE RESPONSIBLE ENGINEER IS AN OFFENSE UNDER THE TEXAS ENGINEERING PRACTICE ACT.

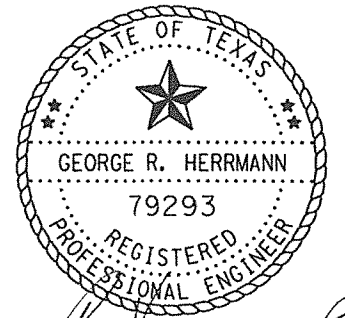
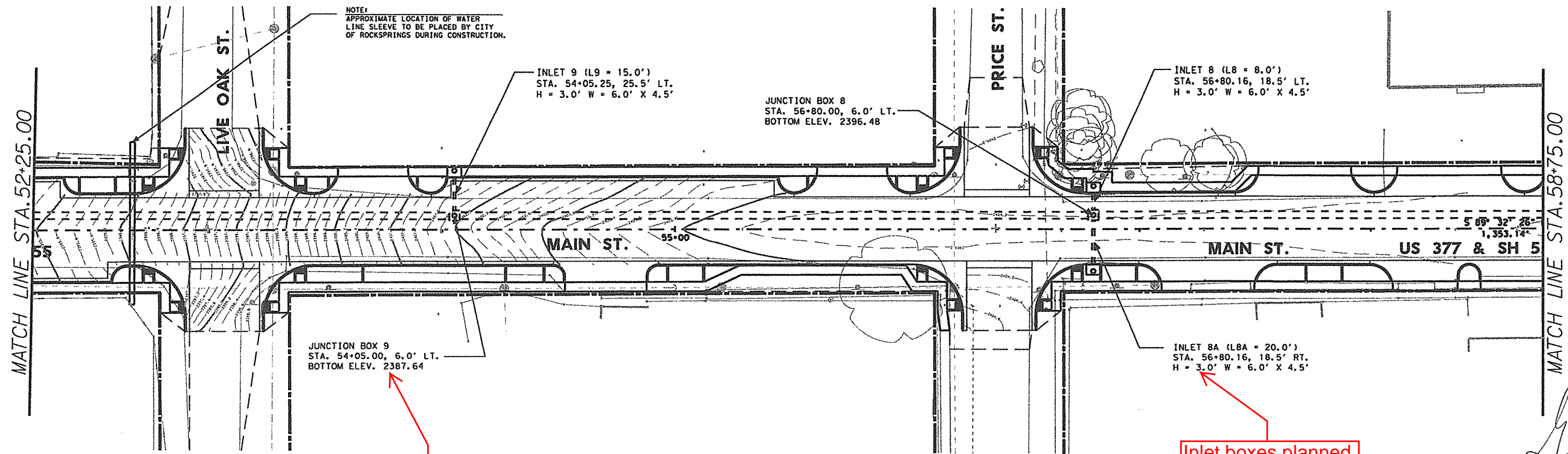


**STORM SEWER
PLAN & PROFILE**

HOR. SCALE 1" = 50'
VERT. SCALE 1" = 5'

SHEET 1 OF 5

FED. RD. DIV. NO.	FEDERAL AID PROJECT NO.	SHEET NO.	
6	STP 2007 (528)	169	
STATE	DIST.	COUNTY	
TEXAS	7	EDWARDS	
CONF.	SECT.	JOB	HIGHWAY NO.
0201	04	022	US 377

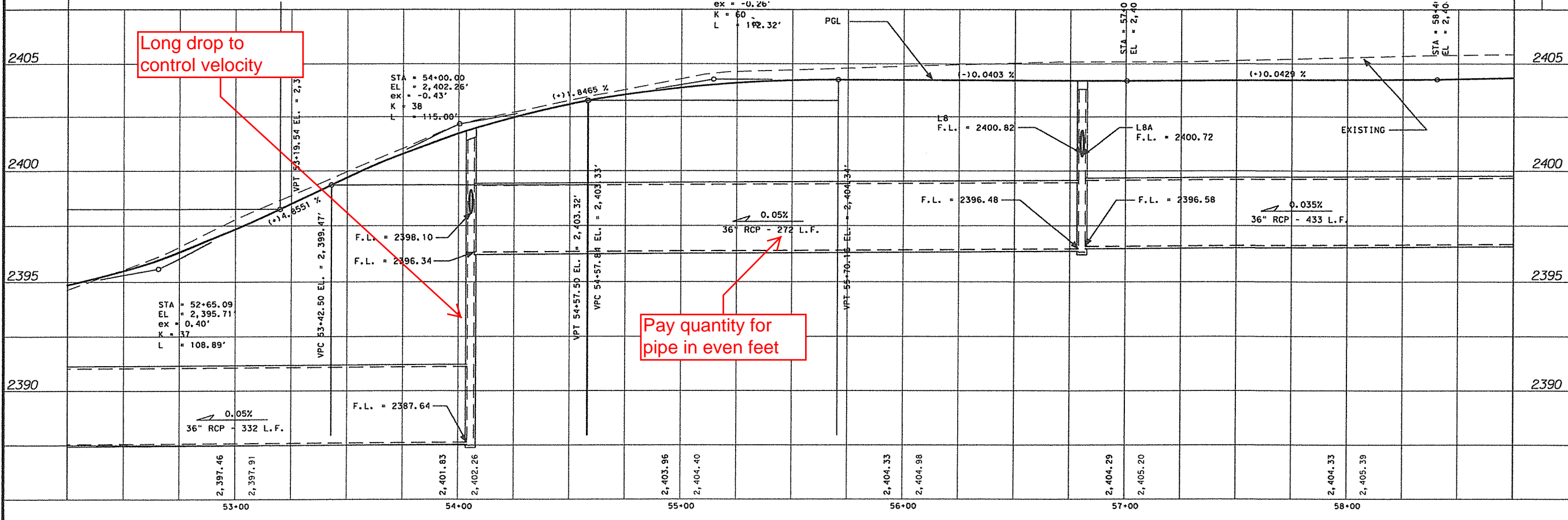


Junction boxes planned on even foot stationing

Inlet boxes planned to closer tolerance than junction boxes

THE SEAL APPEARING ON THIS DOCUMENT WAS AUTHORIZED BY George R. Herrmann, P.E. #79293 ON 13 February 2007. ALTERATION OF A SEALED DOCUMENT WITHOUT PROPER NOTIFICATION TO THE RESPONSIBLE ENGINEER IS AN OFFENSE UNDER THE TEXAS ENGINEERING PRACTICE ACT.

EST.		FINAL		UNIT		DESCRIPTION	
650				LF		TRENCH EXCAVATION PROTECTION	



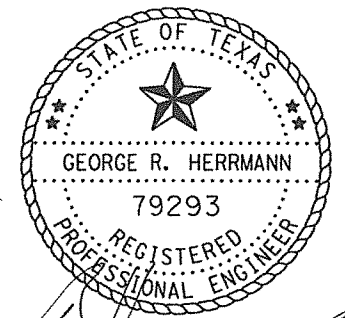
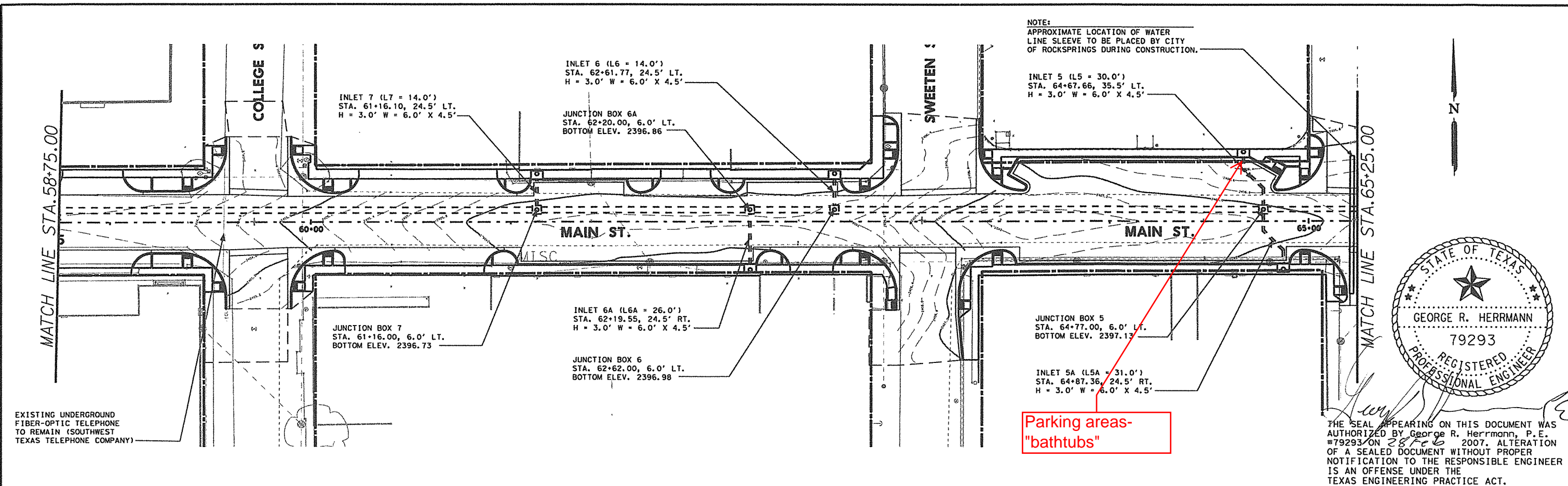
Texas Department of Transportation
© 2007 1400T

STORM SEWER PLAN & PROFILE

HOR. SCALE 1" = 50'
VERT. SCALE 1" = 5'

SHEET 2 OF 5

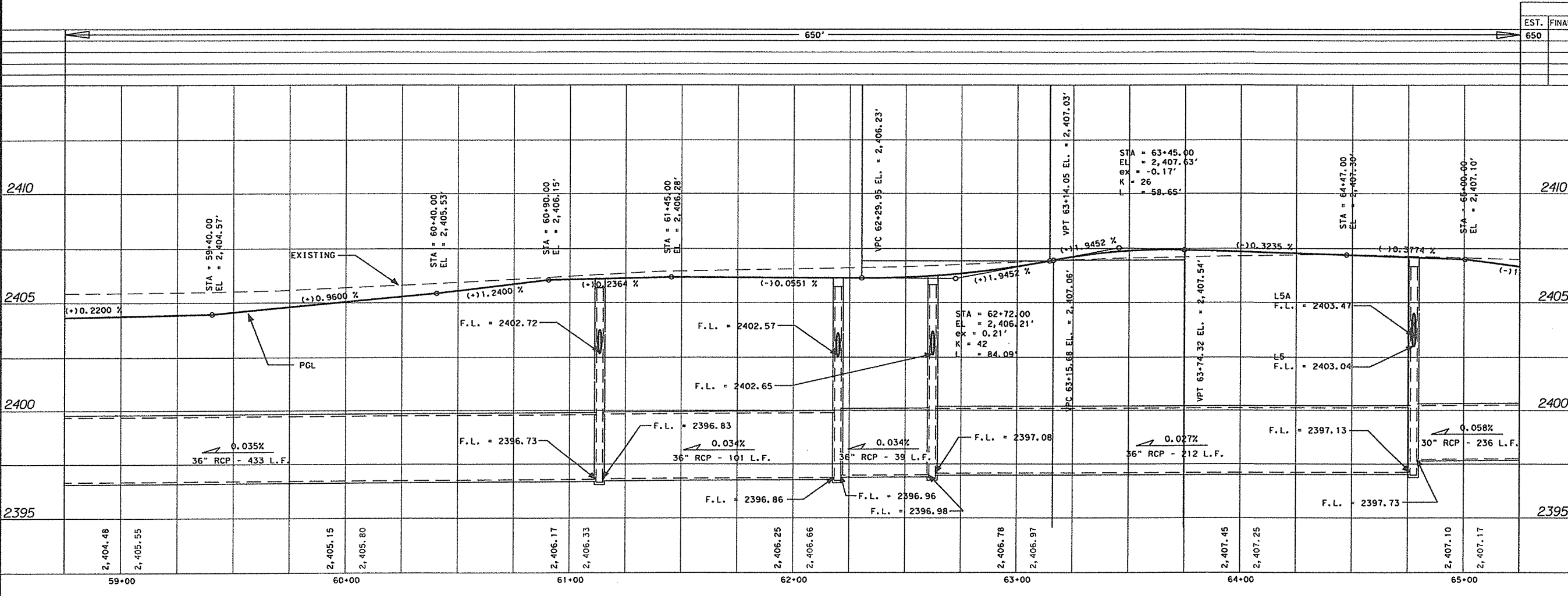
FED. RD. DIV. NO.	FEDERAL AID PROJECT NO.	SHEET NO.	
6	STP 2007 (528)	170	
STATE	DIST.	COUNTY	
TEXAS	7	EDWARDS	
CONT.	SECT.	JOB	HIGHWAY NO.
0201	04	022	US 377



THE SEAL APPEARING ON THIS DOCUMENT WAS AUTHORIZED BY George R. Herrmann, P.E. #79293 ON 28 Feb 2007. ALTERATION OF A SEALED DOCUMENT WITHOUT PROPER NOTIFICATION TO THE RESPONSIBLE ENGINEER IS AN OFFENSE UNDER THE TEXAS ENGINEERING PRACTICE ACT.

Parking areas-
"bathtubs"

SHEET TOTALS			
EST.	FINAL	UNIT	DESCRIPTION
650		LF	TRENCH EXCAVATION PROTECTION

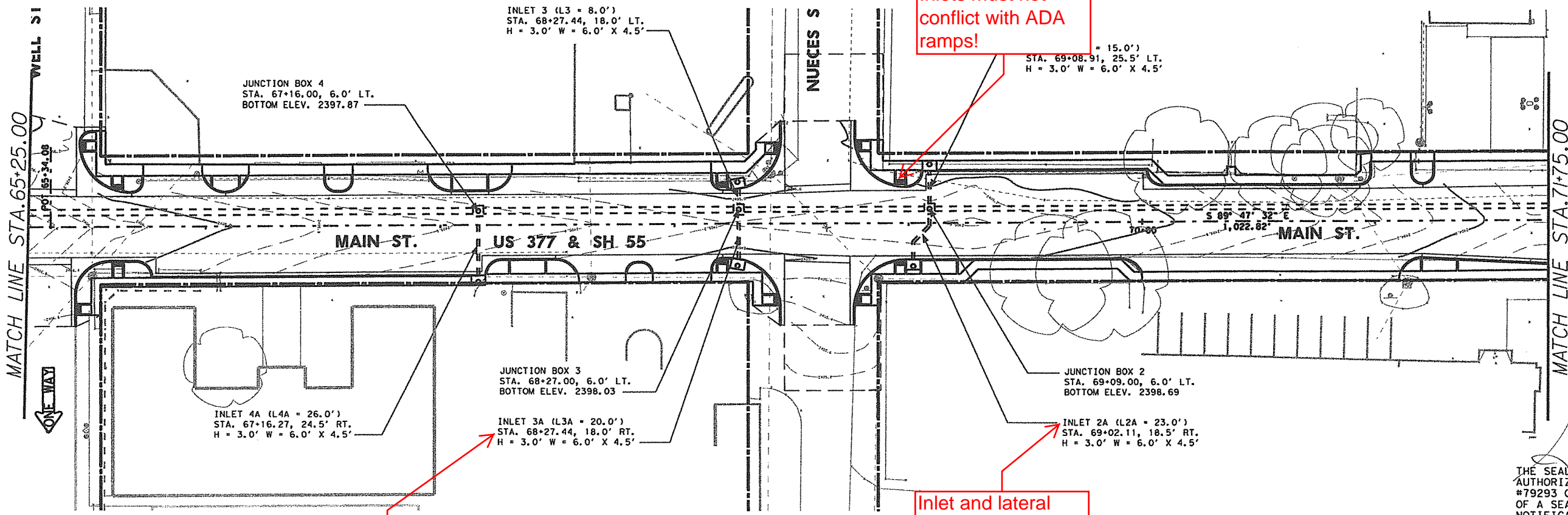


STORM SEWER PLAN & PROFILE

HOR. SCALE 1" = 50'
VERT. SCALE 1" = 5'

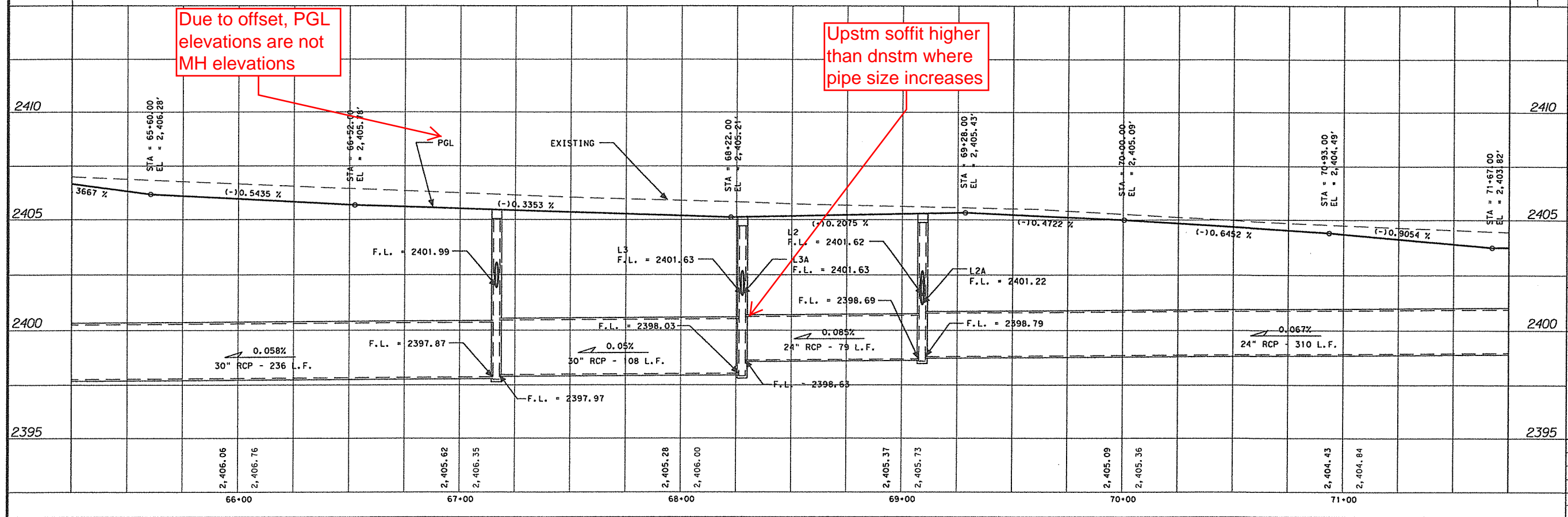
SHEET 3 OF 5

FED. RD. DIV. NO.	FEDERAL AID PROJECT NO.	SHEET NO.	
6	STP 2007(528)	171	
STATE	DIST.	COUNTY	
TEXAS	7	EDWARDS	
CONT.	SECT.	JOB	HIGHWAY NO.
0201	04	022	US 377



THE SEAL APPEARING ON THIS DOCUMENT WAS AUTHORIZED BY George R. Herrmann, P.E. #79293 ON 13 February 2007. ALTERATION OF A SEALED DOCUMENT WITHOUT PROPER NOTIFICATION TO THE RESPONSIBLE ENGINEER IS AN OFFENSE UNDER THE TEXAS ENGINEERING PRACTICE ACT.

SHEET TOTALS			
EST.	FINAL	UNIT	DESCRIPTION
650		LF	TRENCH EXCAVATION PROTECTION

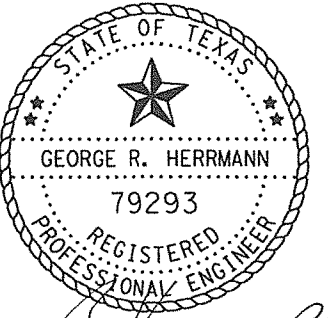
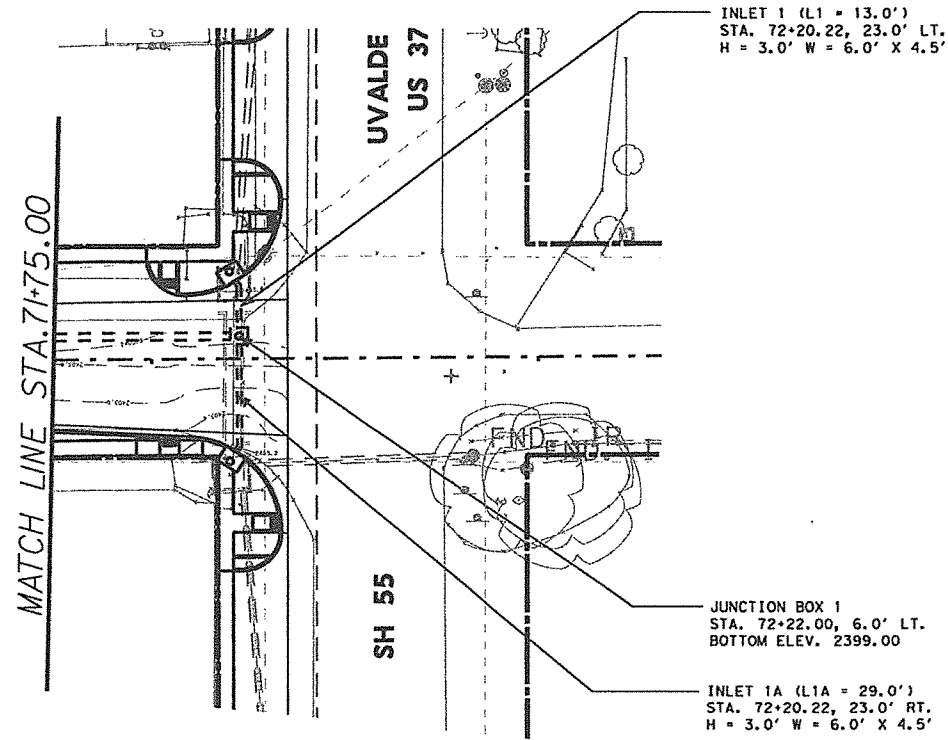


STORM SEWER PLAN & PROFILE

HOR. SCALE 1" = 50'
VERT. SCALE 1" = 5'

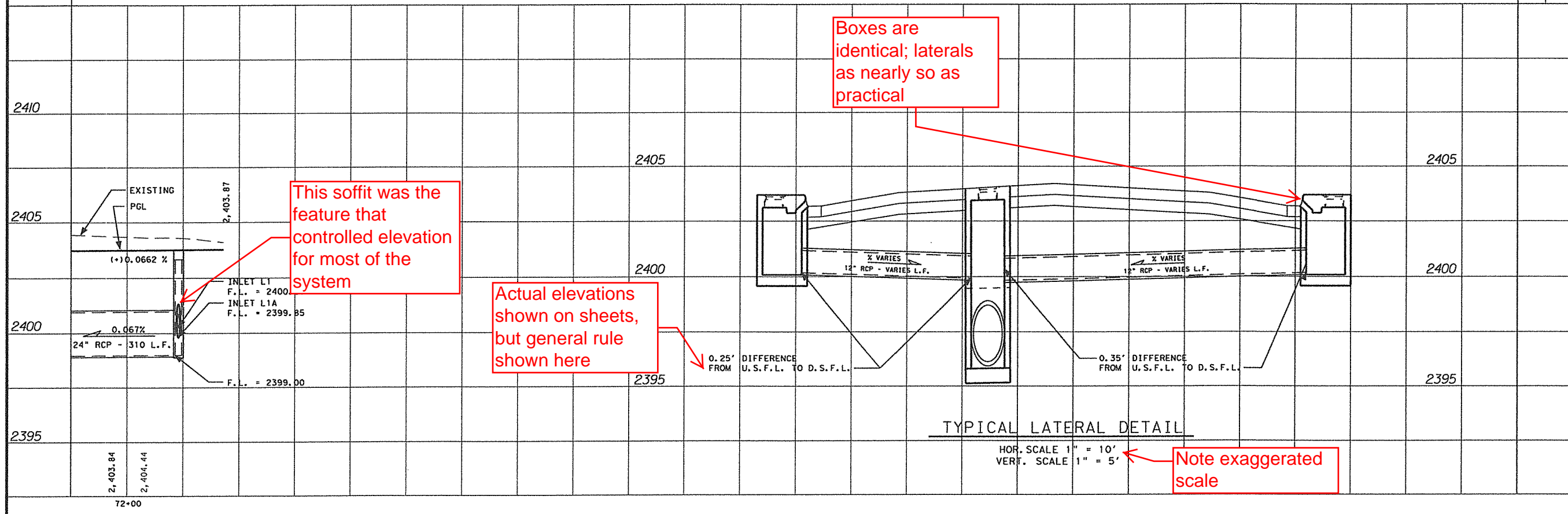
SHEET 4 OF 5

FED. RD. DIV. NO.	FEDERAL AID PROJECT NO.	SHEET NO.	
6	STP 2007(528)	172	
STATE	DIST.	COUNTY	
TEXAS	7	EDWARDS	
CONT.	SECT.	JOB	HIGHWAY NO.
0201	04	022	US 377



THE SEAL APPEARING ON THIS DOCUMENT WAS AUTHORIZED BY George R. Herrmann, P.E. #79293 ON 13 February, 2007. ALTERATION OF A SEALED DOCUMENT WITHOUT PROPER NOTIFICATION TO THE RESPONSIBLE ENGINEER IS AN OFFENSE UNDER THE TEXAS ENGINEERING PRACTICE ACT.

EST.		FINAL	UNIT	DESCRIPTION
20			LF	TRENCH EXCAVATION PROTECTION



Texas Department of Transportation © 2007 TXDOT

STORM SEWER PLAN & PROFILE

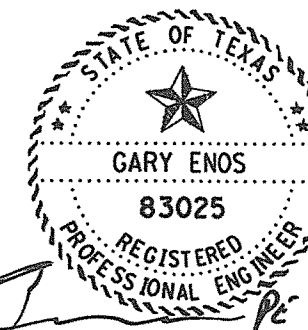
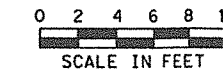
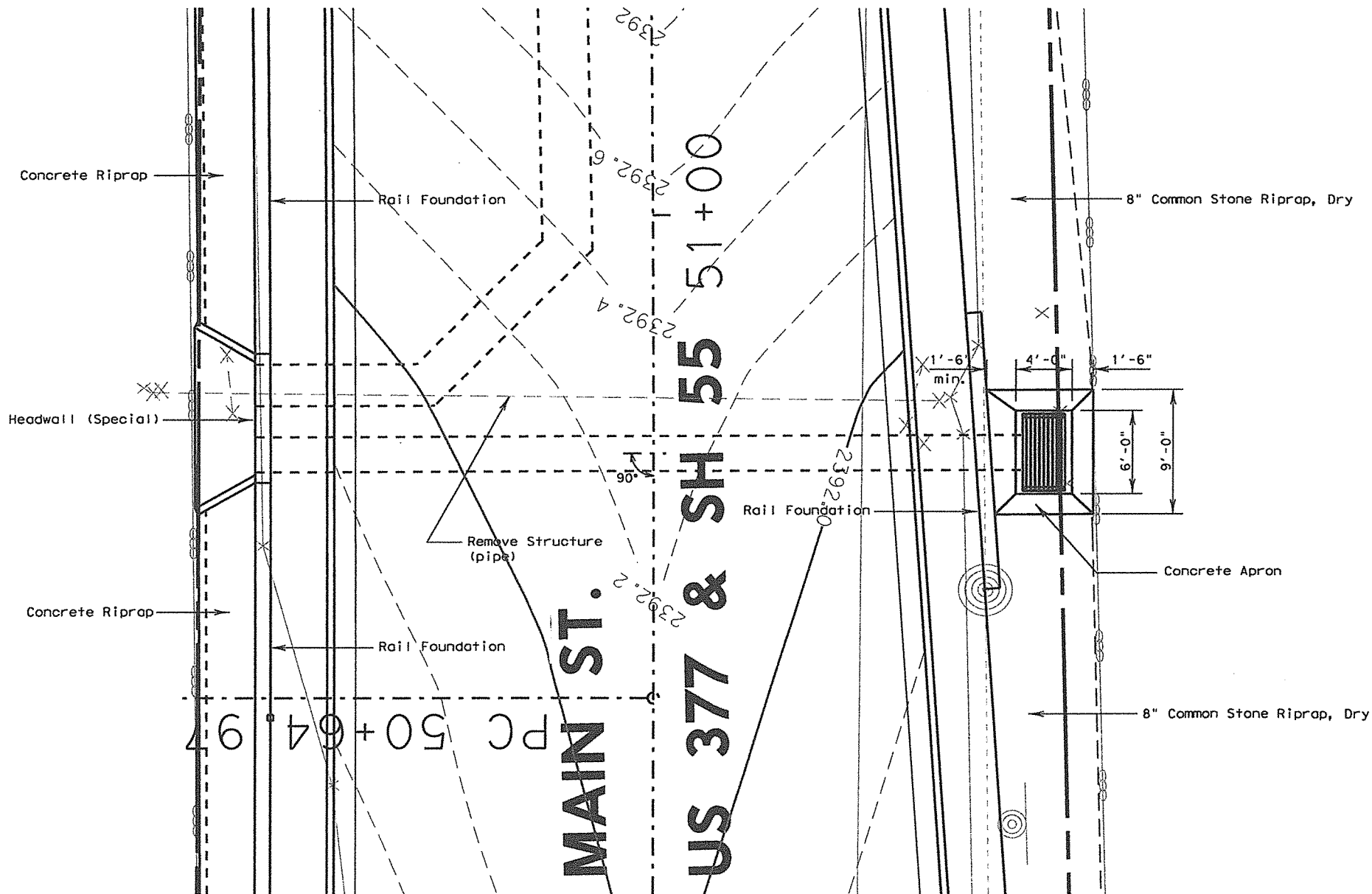
HOR. SCALE 1" = 50'
VERT. SCALE 1" = 5'

SHEET 5 OF 5

FED. RD. DIV. NO. 6	FEDERAL AID PROJECT NO. STP 2007 (528)	SHEET NO. 173
STATE TEXAS	DIST. 7	COUNTY EDWARDS
CONT. 0201	SECT. 04	JOB 022
		HIGHWAY NO. US 377

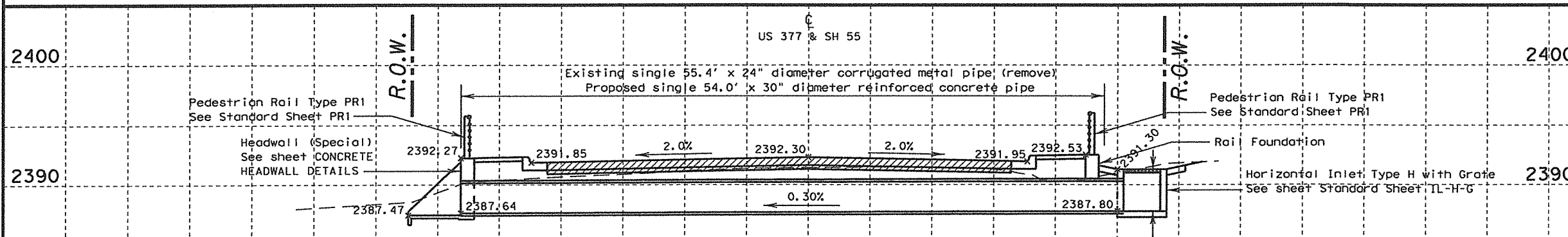
Rocksprings City Park

Rocksprings City Yard



[Handwritten Signature]

THE SEAL APPEARING ON THIS DOCUMENT WAS AUTHORIZED BY GARY ENOS, P.E. #83025 ON ~~4/26/10~~ 2007. ALTERATION OF A SEALED DOCUMENT WITHOUT PROPER NOTIFICATION TO THE RESPONSIBLE ENGINEER IS AN OFFENSE UNDER THE TEXAS ENGINEERING PRACTICE ACT.



ESTIMATED QUANTITIES:				
0420	2006	CL C CONC (RAIL FOUNDATION)	14.5	CY
0432	2001	RIPRAP (CONC) (4 IN)	6.7	CY
0432	2035	RIPRAP (CONC) (6 IN)	3.9	CY
0432	2016	RIPRAP (STONE COMMON) (DRY) (8 IN)	20.2	CY
0450	2025	RAIL (TY PR1)	157.334	LF
0464	2007	RC PIPE (CL III) (30 IN)	54.0	LF
0465	2003	INLET (COMPL) (TY H)	1	EA
0466	2203	HEADWALL (SPECIAL)	1	EA
0496	2007	REMOV STR (PIPE)	55.4	LF

Station 50+82.78

Horizontal Scale: 1"=10'
Vertical Scale: 1"=10'

CULVERT LAYOUT

SCALE 1" = 10'
SHEET 1 OF 1

FED. RD. DIV. NO.	PROJECT NO.		SHEET NO.
6			174
STATE	DIST.	COUNTY	
TEXAS	SJT	EDWARDS	
CONT.	SECT.	JOB	HIGHWAY NO.
0201	04	022	US 377